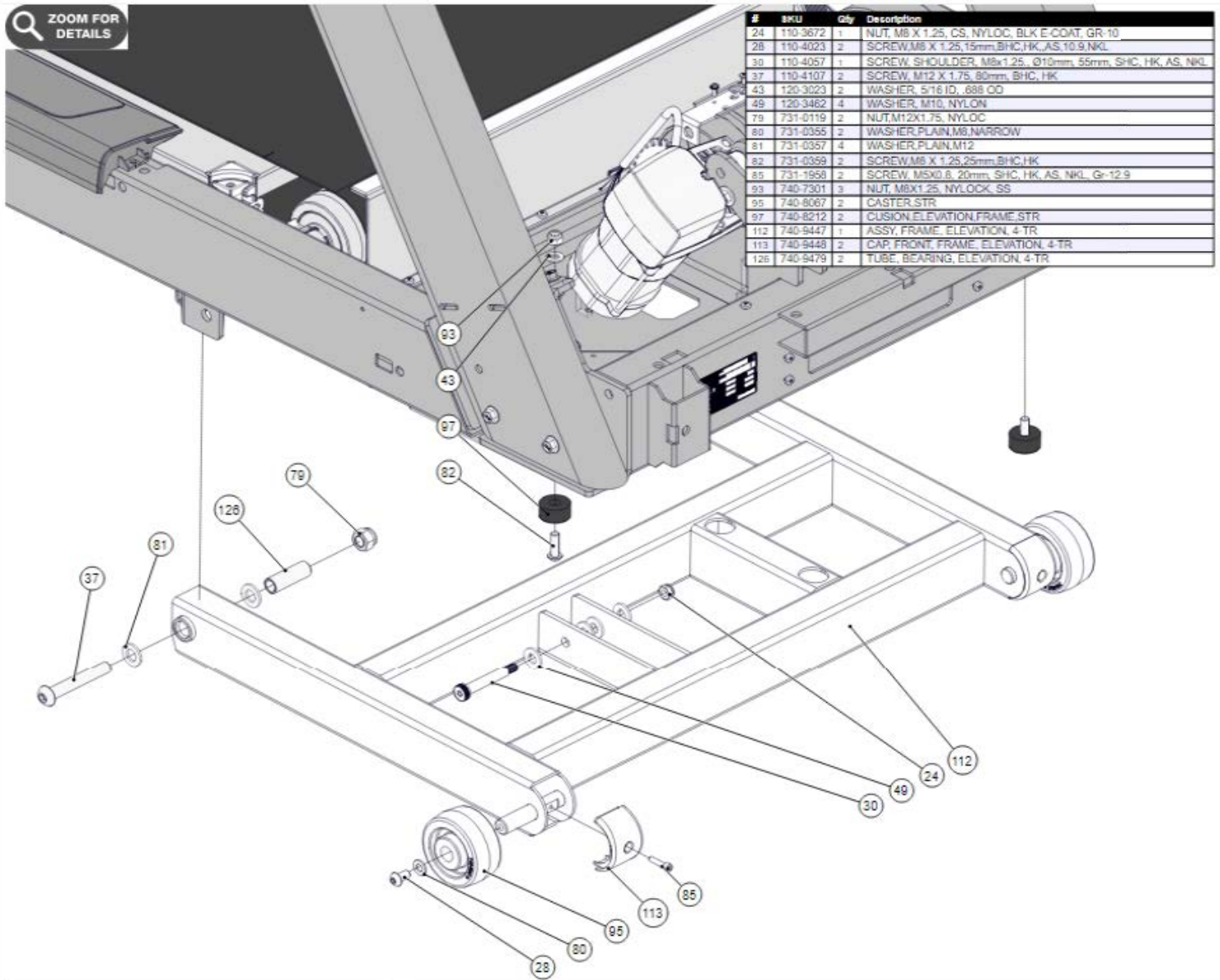
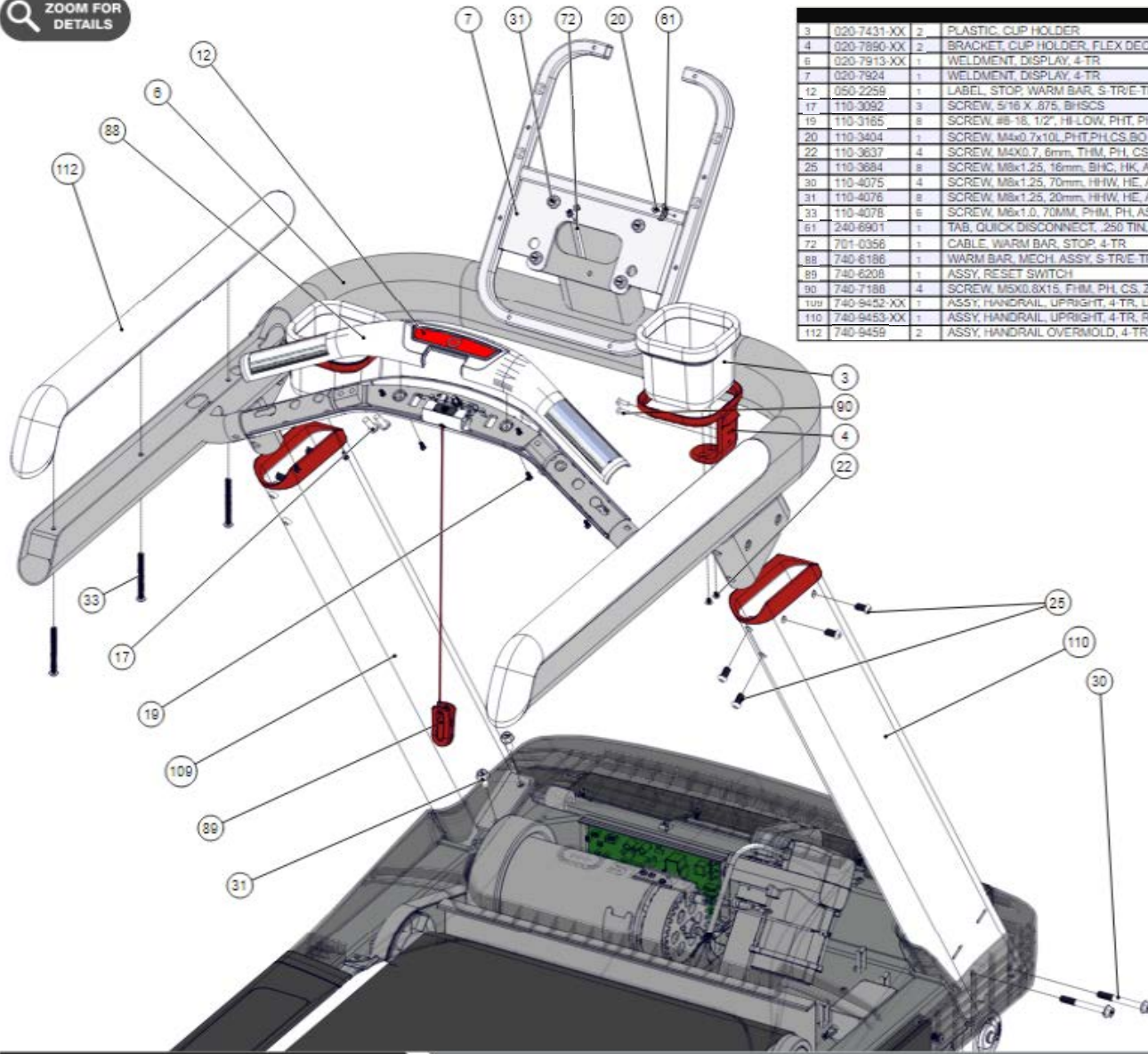


ZOOM FOR DETAILS



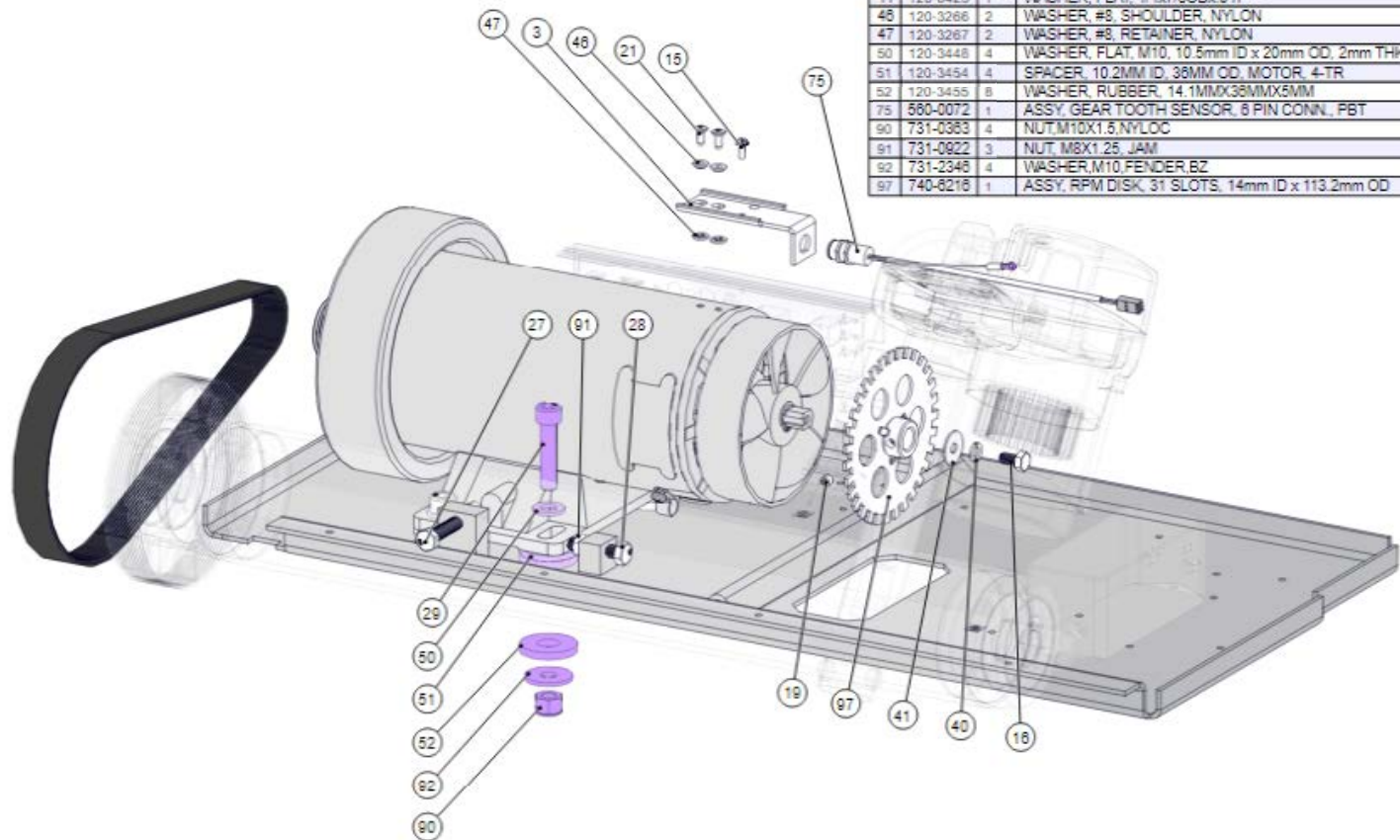
#	SKU	Qty	Description
24	110-9672	1	NUT, M8 X 1.25, CS, NYLOC, BLK E-COAT, GR-10
28	110-4023	2	SCREW, M8 X 1.25, 15mm, BHC, HK, AS, 10.9, NKL
30	110-4057	1	SCREW, SHOULDER, M8x1.25, Ø10mm, 55mm, SHC, HK, AS, NKL
37	110-4107	2	SCREW, M12 X 1.75, 80mm, BHC, HK
43	120-3023	2	WASHER, 5/16 ID, .888 OD
49	120-3462	4	WASHER, M10, NYLON
79	731-0119	2	NUT, M12X1.75, NYLOC
80	731-0355	2	WASHER, PLAIN, M8, NARROW
81	731-0357	4	WASHER, PLAIN, M12
82	731-0399	2	SCREW, M8 X 1.25, 25mm, BHC, HK
85	731-1958	2	SCREW, M5X0.8, 20mm, SHC, HK, AS, NKL, G-12.9
93	740-7301	3	NUT, M8X1.25, NYLOCK, SS
95	740-8067	2	CASTER, STR
97	740-8212	2	CUSHION, ELEVATION, FRAME, STR
112	740-9447	1	ASSY, FRAME, ELEVATION, 4 TR
113	740-9448	2	CAP, FRONT, FRAME, ELEVATION, 4-TR
126	740-9479	2	TUBE, BEARING, ELEVATION, 4-TR

ZOOM FOR  
DETAILS



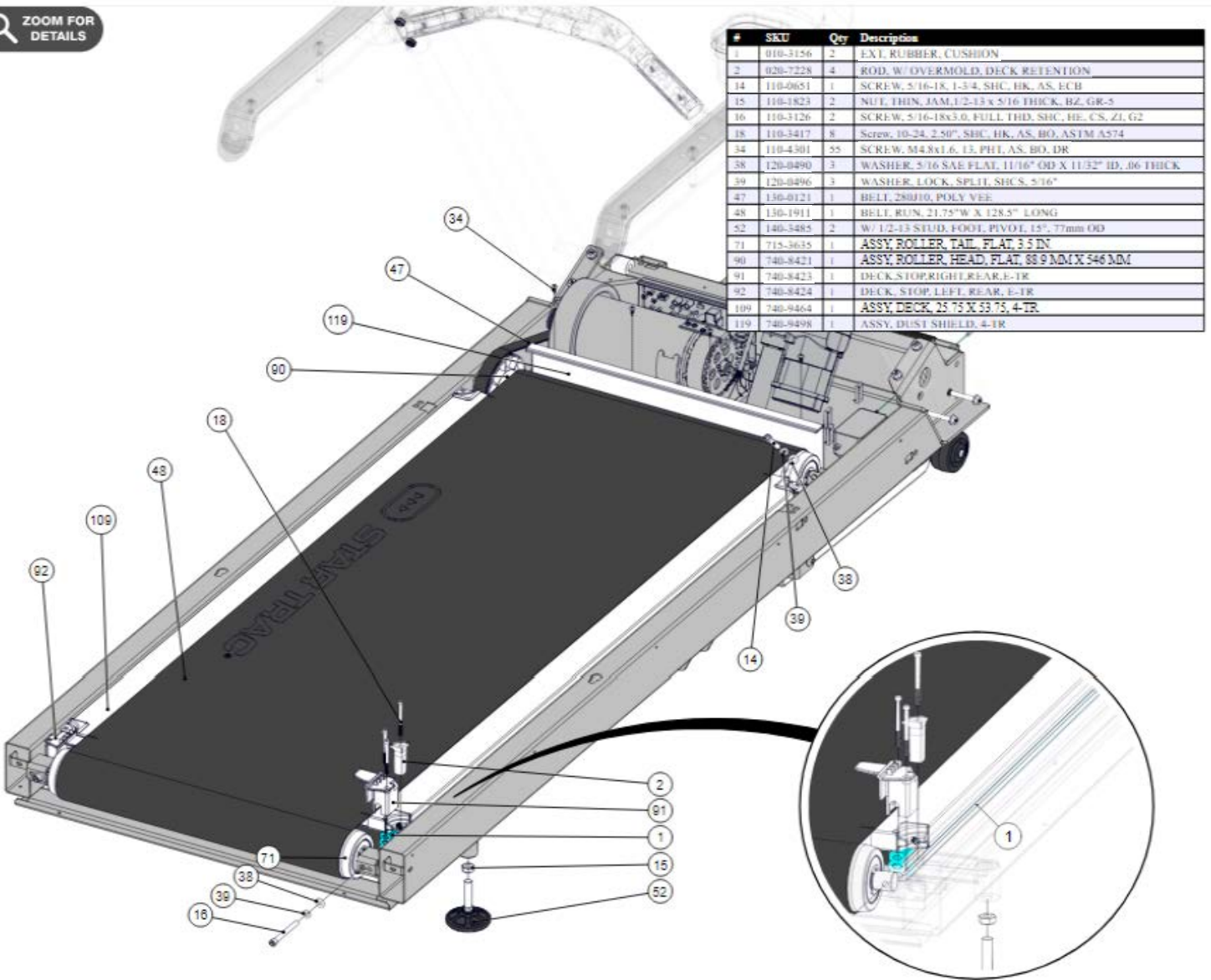
3	020-7431-XX	2	PLASTIC, CUP HOLDER
4	020-7890-XX	2	BRACKET, CUP HOLDER, FLEX DECK
6	020-7913-XX	1	WELDMENT, DISPLAY, 4-TR
7	020-7924	1	WELDMENT, DISPLAY, 4-TR
12	050-2259	1	LABEL, STOP, WARM BAR, S-TR/E-TR
17	110-3092	3	SCREW, #8 X .875, BHSCS
19	110-3185	8	SCREW, #8-18, 1/2", HI-LOW, PHT, PH, CS, ZP-B
20	110-3404	1	SCREW, M4x0.7x10L, PHT, PH, CS, BO
22	110-3637	4	SCREW, M4X0.7, 6mm, THM, PH, CS, NKL
25	110-3894	8	SCREW, M8x1.25, 16mm, BHC, HK, AS, GR 10.9, BLK E-COAT
30	110-4075	4	SCREW, M8x1.25, 20mm, HHW, HE, AS, FL, NKL, G-10.9
31	110-4076	8	SCREW, M8x1.25, 20mm, HHW, HE, AS, FL, NKL, G-10.9
33	110-4078	6	SCREW, M6x1.0, 70MM, PFM, PH, AS, 10.9, ZPB
61	240-6901	1	TAB, QUICK DISCONNECT, .250 TIN, PAIR
72	701-0356	1	CABLE, WARM BAR, STOP, 4-TR
88	740-6186	1	WARM BAR, MECH, ASSY, S-TR/E-TR
89	740-6208	1	ASSY, RESET SWITCH
90	740-7186	4	SCREW, M5X0.8X15, FHM, PH, CS, ZP
109	740-9452-XX	1	ASSY, HANDRAIL, UPRIGHT, 4-TR, LEFT
110	740-9453-XX	1	ASSY, HANDRAIL, UPRIGHT, 4-TR, RIGHT
112	740-9459	2	ASSY, HANDRAIL OVERMOLD, 4-TR

#	SKU	Qty	Description
3	020-7375	1	BRACKET, RPM SENSOR, SUPPORT,DC S-TR
15	110-0180	1	SCREW, 8-32 X 3/8" HHMS,WWASH
16	110-0580	1	SCREW, 1/4-20x 1/2" HHCS
19	110-3093	1	SCREW, 1/4-20 X .25, SET, SELF-LOCKING
21	110-3404	3	SCREW, M4x0.7x10L, PHT,PH,CS,BO
27	110-3882	1	SCREW,M8x1.25 50mm,HHC,HE,AS,ZC,GR12.9
28	110-3901	2	SCREW,M8x1.25 35mm,HHC,HE,AS,ZC,GR12.9
29	110-4024	4	SCREW, M10x1.5, 45mm, SHC, HK, CS, NKL, FT, Gr 8.8
40	120-0420	1	WASHER, 1/4, SPLIT LOCK
41	120-0425	1	WASHER, FLAT, 1/4x7/8ODx.047
46	120-3266	2	WASHER, #8, SHOULDER, NYLON
47	120-3267	2	WASHER, #8, RETAINER, NYLON
50	120-3448	4	WASHER, FLAT, M10, 10.5mm ID x 20mm OD, 2mm THK
51	120-3454	4	SPACER, 10.2MM ID, 38MM OD, MOTOR, 4-TR
52	120-3455	8	WASHER, RUBBER, 14.1MMX36MMX5MM
75	580-0072	1	ASSY, GEAR TOOTH SENSOR, 6 PIN CONN., PBT
90	731-0363	4	NUT, M10X1.5, NYLOC
91	731-0922	3	NUT, M8X1.25, JAM
92	731-2348	4	WASHER, M10 FENDER BZ
97	740-6218	1	ASSY, RPM DISK, 31 SLOTS, 14mm ID x 113.2mm OD





ZOOM FOR DETAILS



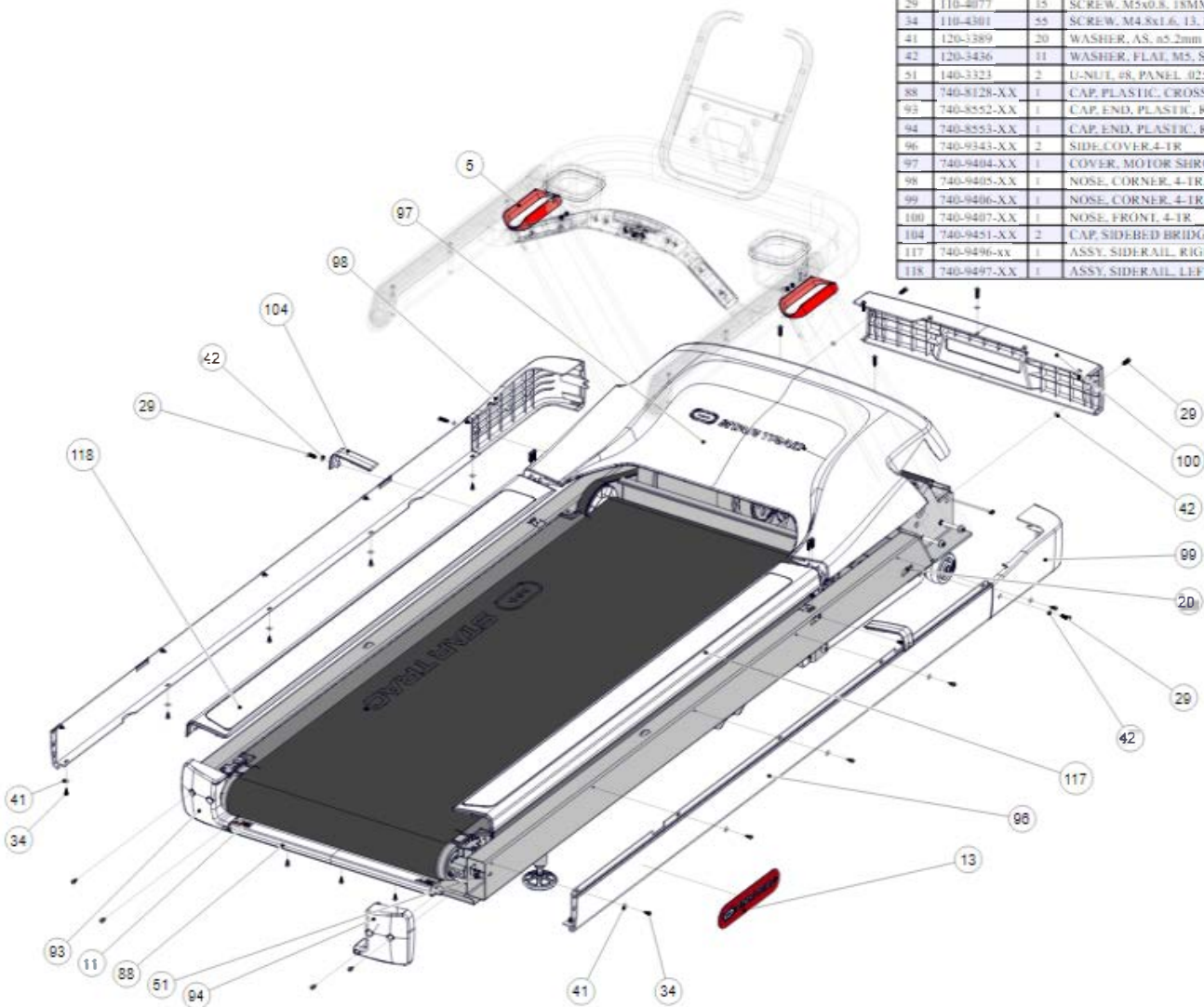
#	SKU	Qty	Description
1	010-3156	2	EXT. RUBBER CUSHION
2	020-7228	4	ROD, W/ OVERMOLD, DECK RETENTION
14	110-0651	1	SCREW, 5/16-18, 1-3/4, SHC, HK, AS, ECB
15	110-1823	2	NUT, THIN, JAM, 1/2-13 X 5/16 THICK, BZ, GR-5
16	110-3126	2	SCREW, 5/16-18X3.0, FULL THD, SHC, HE, CS, Z1, G2
18	110-3417	8	Screw, 10-24, 2.50", SHC, HK, AS, BO, ASTM A574
34	110-4301	55	SCREW, M4X1.6, L3, PH1, AS, BO, DR
38	120-0490	3	WASHER, 5/16 SAE FLAT, 11/16" OD X 11/32" ID, .06 THICK
39	120-0496	3	WASHER, LOCK, SPLIT, SHCS, 5/16"
47	130-0121	1	BELL, 280ID, POLY YEE
48	130-1911	1	BELL, RUN, 21.75" W X 128.5" LONG
52	140-3485	2	W/ 1/2-13 STUD, FOOT, PIVOT, 15", 77mm OD
71	715-3635	1	ASSY, ROLLER, TAIL, FLAT, 3.5 IN
90	740-8421	1	ASSY, ROLLER, HEAD, FLAT, 88.9 MM X 546 MM
91	740-8423	1	DECK, STOP, RIGHT, REAR, E-TR
92	740-8424	1	DECK, STOP, LEFT, REAR, E-TR
109	740-9464	1	ASSY, DECK, 25.75 X 53.75, 4-TR
119	740-9498	1	ASSY, DUST SHIELD, 4-TR

CORE HEALTH & FITNESS  
 StarMaster SCHWANN NAUTILUS FOUR TRAC THEDOWN

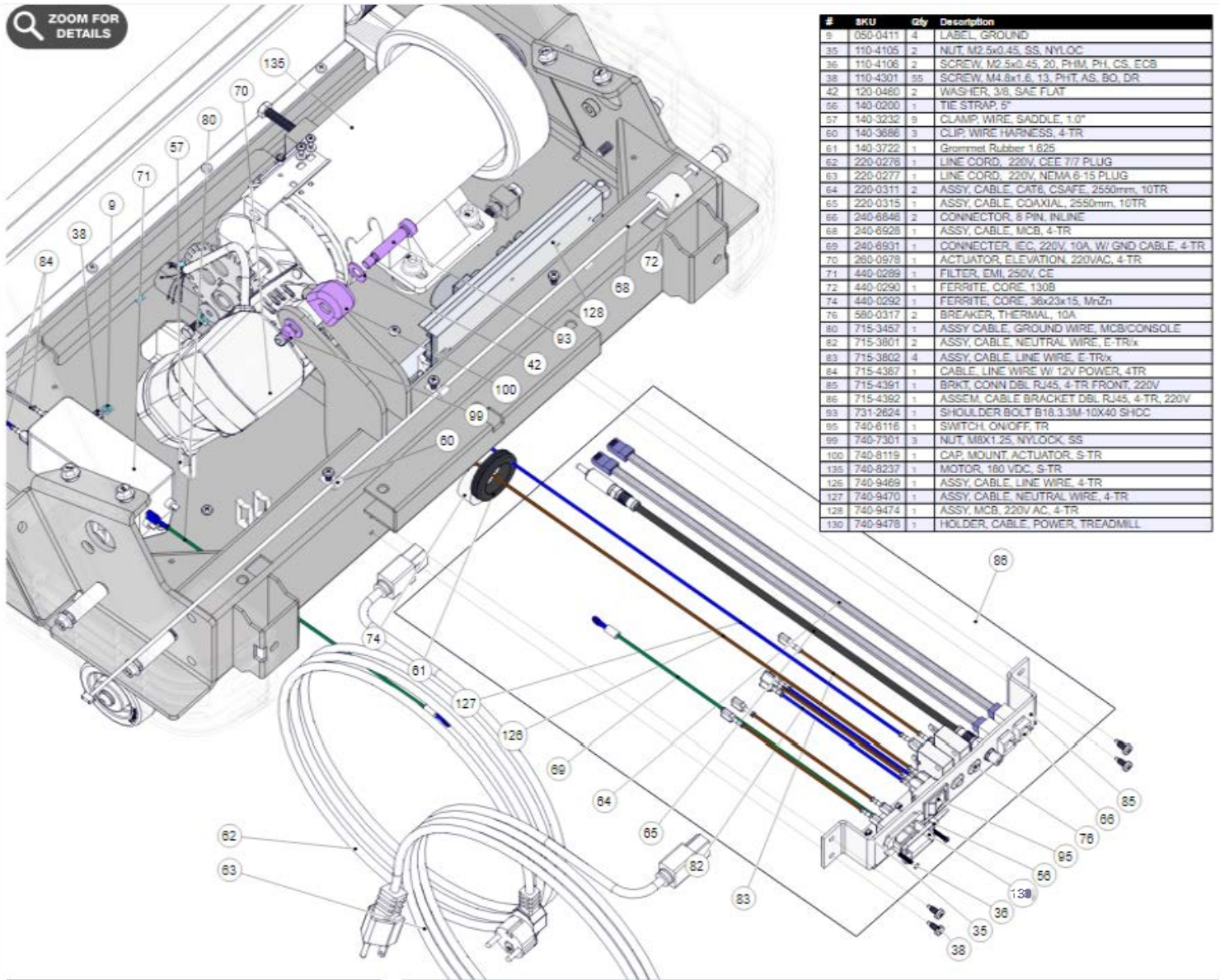
9 3614: Deck, Belts, Leveling Feet

ZOOM FOR DETAILS

#	SKU	Qty	Description
5	020-7911-XX	2	BEAUTY RING, HANDRAILS, 150X50
11	050-2159	2	LABEL, CAUTION, PINCH POINTS, TR
13	050-5762	2	LABEL, STAR TRAC, 247.98mm X 58.77mm
20	110-3671	15	NUT, "U", BARREL, TAPERED, M5x0.8mm
29	110-4077	15	SCRE-W, M5x0.8, 18MM, PHM, PH, ZPB
34	110-4301	55	SCRE-W, M4.8x1.6, 13, PH1, AS, BO, DR
41	120-3389	20	WASHER, AS, a5.2mm X n 12.7mm X n 1mm
42	120-3436	11	WASHER, FLAT, M5, SS, BO
51	140-3323	2	U-NUT, #8, PANEL, #25-125
88	740-8128-XX	1	CAP, PLASTIC, CROSSMEMBER, REAR, S-TR
93	740-8552-XX	1	CAP, END, PLASTIC, REAR, LEFT, S-TRc
94	740-8553-XX	1	CAP, END, PLASTIC, REAR, RIGHT, S-TRc
96	740-9343-XX	2	SIDE COVER, 4-TR
97	740-9404-XX	1	COVER, MOTOR SHROUD, 4-TR
98	740-9405-XX	1	NOSE, CORNER, 4-TR, LEFT
99	740-9406-XX	1	NOSE, CORNER, 4-TR, RIGHT
100	740-9407-XX	1	NOSE, FRONT, 4-TR
104	740-9451-XX	2	CAP, SIDEBED BRIDGE, 4-TR
117	740-9496-XX	1	ASSY, SIDERAIL, RIGHT COVER W/ FOAM, 4-TR
118	740-9497-XX	1	ASSY, SIDERAIL, LEFT COVER W/ FOAM, 4-TR



ZOOM FOR DETAILS



#	SKU	Qty	Description
9	050-0411	4	LABEL, GROUND
35	110-4105	2	NUT, M2.5x0.45, SS, NYLOC
36	110-4106	2	SCREW, M2.5x0.45, 20, PHM, PH, CS, ECB
38	110-4301	55	SCREW, M4.8x1.6, 13, PHT, AS, BO, DR
42	120-0460	2	WASHER, 3/8, SAE, FLAT
56	140-0200	1	TIE STRAP, 5"
57	140-3232	9	CLAMP WIRE, SADDLE, 1.0"
60	140-3686	3	CLIP WIRE HARNESS, 4-TR
61	140-3722	1	Grommet Rubber 1.625
62	220-0278	1	LINE CORD, 220V, CEE 7/7 PLUG
63	220-0277	1	LINE CORD, 220V, NEMA 6-15 PLUG
64	220-0311	2	ASSY, CABLE, CAT6, CSAF6, 2550mm, 10TR
65	220-0315	1	ASSY, CABLE, COAXIAL, 2550mm, 10TR
66	240-6646	2	CONNECTOR, 6 PIN, INLINE
68	240-6928	1	ASSY, CABLE, MCB, 4-TR
69	240-6931	1	CONNECTOR, IEC, 220V, 10A, W/ GND CABLE, 4-TR
70	260-0978	1	ACTUATOR, ELEVATION, 220VAC, 4-TR
71	440-0289	1	FILTER, EMI, 250V, CE
72	440-0290	1	FERRITE, CORE, 130B
74	440-0292	1	FERRITE, CORE, 36x23x15, MnZn
76	580-0317	2	BREAKER, THERMAL, 10A
80	715-3457	1	ASSY, CABLE, GROUND WIRE, MCB/CONSOLE
82	715-3801	2	ASSY, CABLE, NEUTRAL WIRE, E-TRx
83	715-3802	4	ASSY, CABLE, LINE WIRE, E-TRx
84	715-4367	1	CABLE, LINE WIRE W/ 12V POWER, 4TR
85	715-4391	1	BRKT, CONN DBL RJ45, 4-TR, FRONT, 220V
86	715-4392	1	ASSEM, CABLE BRACKET DBL, RJ45, 4-TR, 220V
89	731-2624	1	SHOULDER BOLT B18.3.3M-10X40 SHDC
95	740-6116	1	SWITCH, ON/OFF, TR
99	740-7301	3	NUT, MBX1.25, NYLOCK, SS
100	740-8119	1	CAP. MOUNT ACTUATOR, S-TR
135	740-8237	1	MOTOR, 180 VDC, S-TR
126	740-9469	1	ASSY, CABLE, LINE WIRE, 4-TR
127	740-9470	1	ASSY, CABLE, NEUTRAL WIRE, 4-TR
128	740-9474	1	ASSY, MCB, 220V AC, 4-TR
130	740-9478	1	HOLDER, CABLE, POWER, TREADMILL

CORE HEALTH & FITNESS



9-3614: Electrical (220V)